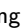





Brainchop: In-browser MRI volumetric segmentation and rendering

Mohamed Masoud ¹, Farfalla Hu ^{1,2}, and Sergey Plis ^{1,2}

1 Tri-institutional Center for Translational Research in Neuroimaging and Data Science (TReNDS), Georgia State University, Georgia Institute of Technology, Emory University, Atlanta, United States of America **2** Department of Computer Science, Georgia State University, Atlanta, United States of America  Corresponding author

DOI: [10.21105/joss.05098](https://doi.org/10.21105/joss.05098)

Software

- [Review](#) 
- [Repository](#) 
- [Archive](#) 

Editor: Samuel Forbes  

Reviewers:

- [@mwegrzyn](#)
- [@62442katieb](#)
- [@richford](#)

Submitted: 17 December 2022

Published: 28 March 2023

License

Authors of papers retain copyright and release the work under a Creative Commons Attribution 4.0 International License ([CC BY 4.0](https://creativecommons.org/licenses/by/4.0/)).

Summary

Brainchop is a web-based tool that allows scientists and clinicians to perform volumetric analysis of structural Magnetic Resonance Imaging (MRI) using pre-trained deep learning models, without the need for technical expertise or setup of AI solutions. It is the first browser-based front-end MRI segmentation tool that can process full brain volumes in a single pass, using the lightweight and reliable Meshnet model ([Fedorov et al., 2017](#)) modified to incorporate volumetric dilated convolutions ([Yu & Koltun, 2016](#)) for increased accuracy and modest computational requirements. In addition to offering extensibility through an open-source framework, Brainchop also addresses privacy concerns by performing client-side processing and leveraging hardware acceleration across different brands and architectures.

Statement of need

Accurate segmentation of brain tissue from MRI volumes is a crucial step in various brain imaging analysis pipelines, with applications ranging from surgical planning and measurement of brain changes to visualization of anatomical structures. However, few professionals possess both domain expertise and machine learning skills, as well as the necessary computational infrastructure, to take advantage of the benefits of artificial intelligence (AI)-assisted neuroimaging. This limitation is particularly pronounced in rural areas and developing countries. To address these challenges, we developed brainchop, an in-browser machine learning platform for volumetric neuroimaging that offers high accessibility, scalability, low latency, ease of use, lack of installation requirements, and cross-platform operation, while also preserving end-user data privacy. Unlike traditional web applications, brainchop operates within the browser environment to process the end-users data locally on their machines without the need for server-side processing and the associated privacy and portability issues. Currently available tools for 3D Neuroimaging such as Freesurfer ([Dale et al., 1999](#)) and SPM ([Friston et al., 1994](#)) are not web-based tools hence they lack the aforementioned features that the browser can bring to Neuroimaging applications. For many clinicians, setting up neuroimaging pipelines is a technological barrier, and providing those pipelines through the browser will help democratize these computational approaches.

Pipeline

In order to deploy the PyTorch MeshNet model in the browser, there is a need to convert it first to tensorflow.js ([Smilkov et al., 2019](#)). Brainchop has a pre-processing pipeline, full-volume and sub-volumes inference options, 3D input/output rendering, and post-processing capability as illustrated in [Figure 1](#) for the tool high-level architecture.

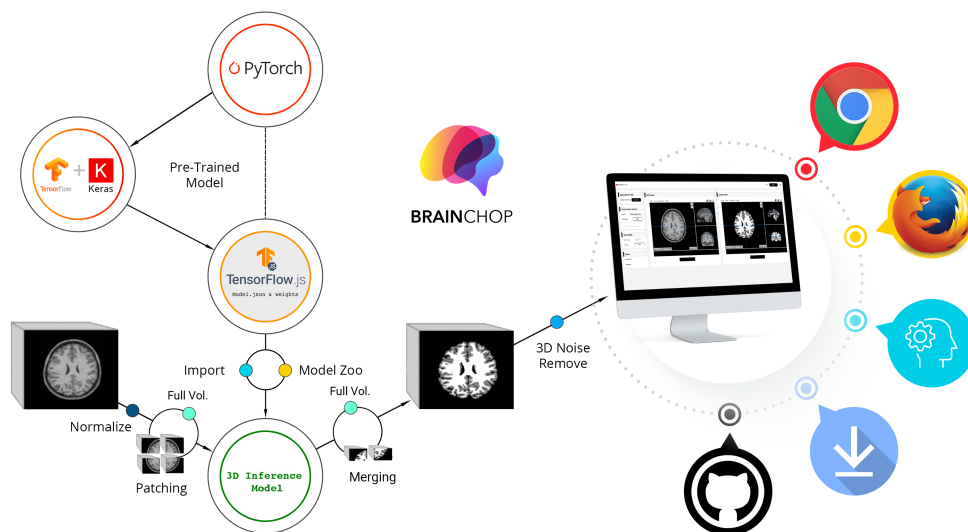


Figure 1: Brainchop high-level architecture.

Preprocessing

Brainchop is designed to support T1 weighted MRI volume segmentation. The input is read in Nifti format ([“Nifti Reader,” 2017](#)). T1 image needs to be in shape 256x256x256, scaled, and resampled to 1 mm isotropic voxels as a preprocessing step for proper results. This preprocessing can be made in brainchop by using `mri_convert.js` which uses Pyodide ([Droettboom et al., 2022](#)) to deploy the conform function used by FastSurfer ([Henschel et al., 2020](#)) for reshaping, scaling, and re-sampling MRI T1 raw image data as shown in [Figure 2 \(a\)](#).

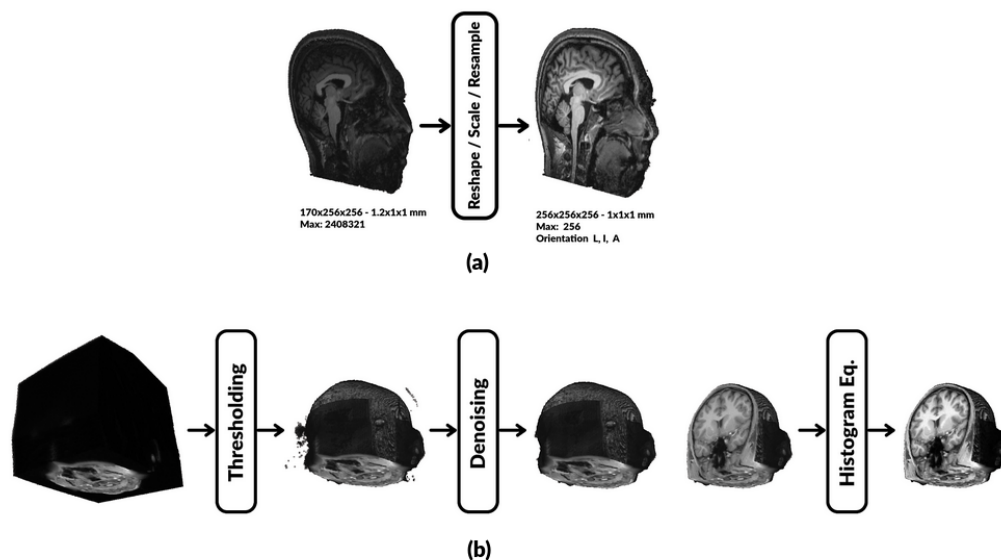


Figure 2: Brainchop preprocessing pipeline (a) Conform operation (b) MRI enhancement operations.

The rest of the preprocessing pipeline is to remove input noisy voxels and enhance input volume intensities to improve the segmentation accuracy [Figure 2 \(b\)](#). In addition, brainchop also

supports MRI tissue cropping to speed up the inference process and lower memory use.

Inference Model

The advantage of MeshNet small size is due to its simple architecture and using dilated convolution in which a typical model for the segmentation task can be constructed with few layers as shown in Figure 3.

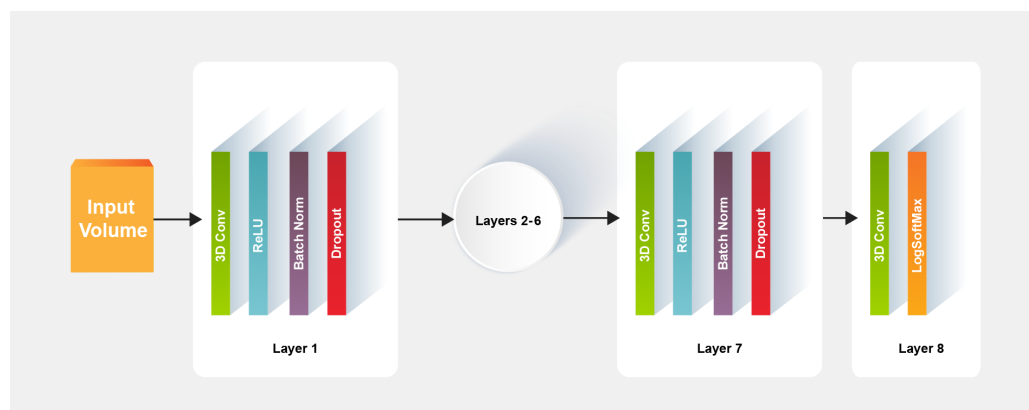


Figure 3: MeshNet architecture.

While the MeshNet model has fewer parameters compared to the classical segmentation model U-Net, it also can achieve a competitive DICE score as shown in Table 1.

Table 1: Segmentation models performance.

Model	Inference Speed	Model Size	Macro DICE
MeshNet GMWM	116 subvolumes/sec	.89 mb	0.96
U-Net GMWM	13 subvolumes/sec	288 mb	0.96
MeshNet GMWM (full brain model)	0.001 sec/volume	0.022 mb	0.96

Results

Multiple pre-trained models are available with brainchop for full-volume and sub-volumes inference including brain masking, gray matter white matter (GMWM) segmentation models, in addition to brain atlas models for 50 cortical regions and 104 cortical and subcortical structures as shown in Figure 4.

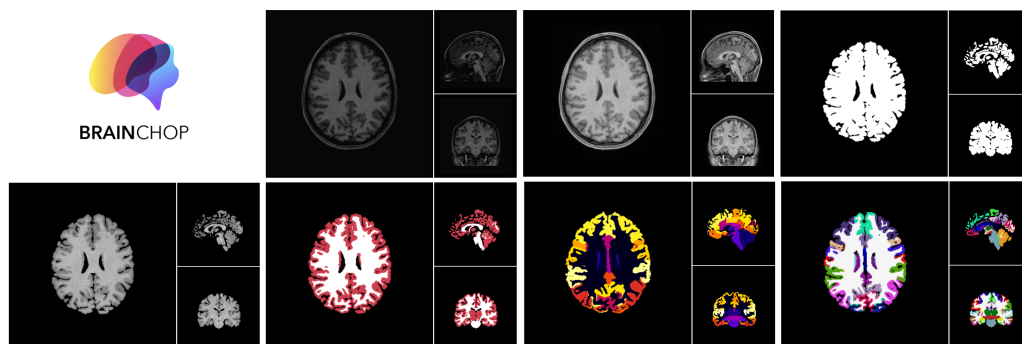


Figure 4: Brainchop outputs.

References

- Brand, A., Allen, L., Altman, M., Hlava, M., & Scott, J. (2015). Beyond authorship: Attribution, contribution, collaboration, and credit. *Learned Publishing*, 28(2), 151–155. <https://doi.org/10.1087/20150211>
- Cabello, R., Qualia, A., & others. (2010). Three.js. In *GitHub repository*. GitHub. <https://github.com/mrdoob/three.js>
- Dale, AM., Fischl, B., & Sereno, MI. (1999). Cortical surface-based analysis: I. Segmentation and surface reconstruction. *Neuroimage*, 9(2), 179–194. <https://doi.org/10.1006/nimg.1998.0395>
- Droettboom, M., Chatham, H., Yurchak, R., Chua, D., Choi, G., Schreiner, H., Abramowitz, M., & others. (2022). *Pyodide* (Version 0.20.0). Zenodo. <https://doi.org/10.5281/zenodo.6430433>
- Fedorov, A., Johnson, J., Damaraju, E., Ozerin, A., Calhoun, V., & Plis, S. (2017). End-to-end learning of brain tissue segmentation from imperfect labeling. *IEEE International Joint Conference on Neural Networks (IJCNN)*. <https://doi.org/10.1109/IJCNN.2017.7966333>
- Friston, KJ., Holmes, AP., Worsley, KJ., Poline, JB., Frith, CD., & Frackowiak, RSJ. (1994). Statistical parametric maps in functional imaging: A general linear approach. *Human Brain Mapping*, 2(4), 189–210. <https://doi.org/10.1002/hbm.460020402>
- Henschel, L., Conjeti, S., Estrada, S., Diers, K., Fischl, B., & Reuter, M. (2020). FastSurfer - a fast and accurate deep learning based neuroimaging pipeline. *Neuroimage*. <https://doi.org/10.1016/j.neuroimage.2020.117012>
- NIfTI reader. (2017). In *GitHub repository*. GitHub. <https://github.com/rii-mango/NIFTI-Reader-JS>
- Papaya dev. team. (2019). *Papaya*. GitHub Pages. <http://rii-mango.github.io/Papaya>
- Smilkov, D., Thorat, N., Assogba, Y., Nicholson, C., Kreeger, N., Yu, P., Cai, S., Nielsen, E., Soegel, D., & others. (2019). TensorFlow.js: Machine learning for the web and beyond. *arXiv*. <https://doi.org/10.48550/arXiv.1901.05350>
- Yu, F., & Koltun, V. (2016). Multi-scale context aggregation by dilated convolutions. *arXiv*. <https://doi.org/10.48550/arXiv.1511.07122>